



THE PERFECT BALANCE OF LUXURY AND PRACTICALITY

THERE ARE LUXURIES IN LIFE THAT AREN'T TIED TO MONEY.

At JELD-WEN, we understand this idea, which is why we craft reliable wood windows and patio doors. Each one is designed to enhance homes with exceptional beauty and energy efficiency at a great value. These windows and patio doors also provide dependable performance time and time again. They're simply worry-free, which, of course, is the best luxury of all.





For the complete line of JELD-WEN® windows and doors, visit us online at www.jeld-wen.com.



DEGAS

RELIABILITY FOR REAL LIFE



Table of Contents

AuraLast—The Worry Free Wood®.....	6
Trim Options-Interior & Exterior.....	8
Decorative Glass Options	10
Divided Lite Options	12
Glass Options.....	14
Screen Options.....	16
Casement Windows	18
Awning Windows	20
Double-Hung Windows.....	22
Horizontal Sliding Windows.....	26
Fixed, Radius & Geometric Windows	28
French View Swinging Patio Doors.....	30
Sliding Patio Doors	32
Hallmark Hinged Patio Doors.....	36
Transom Windows	38
Warranty	40
About JELD-WEN	43

AURALAST—THE WORRY-FREE WOOD®

Protects against Wood Rot, Termites and Water Saturation.



Reliability

Only JELD-WEN makes window and door products with natural pine AuraLast® Wood.



WORRY



Surface to Core Protection

AuraLast Wood provides virtually 100% penetration of the protective ingredients while other manufacturers use submersion/dip-treatment methods which only protect the outer surface of the wood.

Protects Against Termites

Harmful termites will eat through unprotected wood—not so with AuraLast Wood.

Protects Against Wood Rot

AuraLast Wood window and door products maintain their structural integrity even in the harshest weather and toughest climates.

Protects Against Water Saturation

AuraLast Wood offers superior resistance to water saturation, which protects against swelling that causes windows and doors to stick.

Working with AuraLast Wood is Easy

Nail and screw holes and trimming and sanding will not compromise the shield of AuraLast protection.

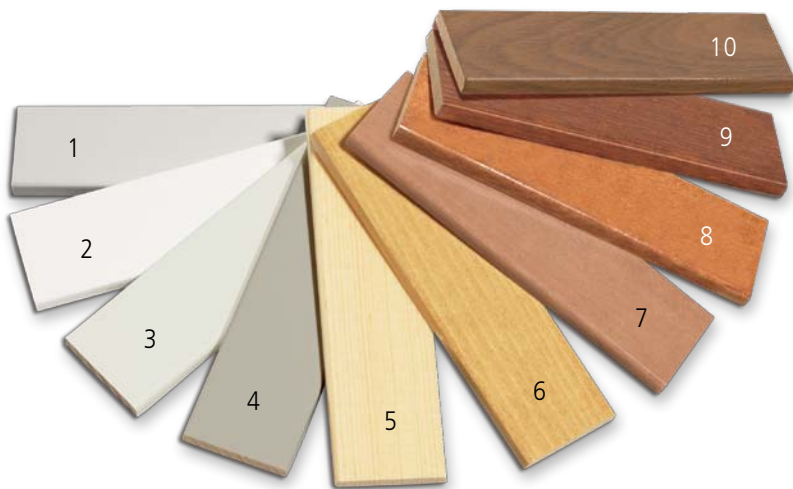
WORRY FREE



Visit jeld-wen.com/lauralast for more information



INTERIOR



Standard Prefinished Interiors

Custom options available

- | | |
|--------------------|--------------|
| 1. Primed | 6. Wheat |
| 2. Brilliant White | 7. Cider |
| 3. Ivory | 8. Fruitwood |
| 4. Desert Sand | 9. Cordovan |
| 5. Clear Lacquer | 10. Walnut |

Colors shown may not match final finish.



Interior Trim

Our radius windows are available with 2-1/4" interior radius casing in three profiles (shown below). Each profile comes in either pine or oak. Corner blocks are also available in pine or oak. Additional patterns and finishes are also available.



Pine corner block



Oak corner block



#327 Ranch casing



#356 Colonial casing



#366 Colonial casing

EXTERIOR



Trim Options

Choose exterior trim for added visual appeal. We offer factory-applied Brickmould, Primed Backband, Flat Casings and Heritage Casings for our windows and patio doors with primed wood exteriors. For clad-wood exteriors, we provide factory-applied Aluminum Brickmould, Adams Casing, Flat Casing and Sill Nosing.

Primed Wood



Brickmould



Heritage

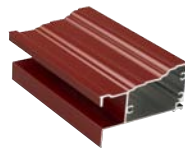


Flat (3-1/2" and 5-1/2")



Primed backband

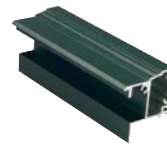
Clad



Adams



Flat



Brickmould



Sill nosing

Clad Colors

The cladding we use features a baked-on finish that does not need to be repainted over time and requires minimal maintenance. Our cladding also allows you to accentuate your home's visual appeal, because we provide a range of beautiful cladding colors. Available colors are shown below.*



Brilliant White



French Vanilla



Desert Sand



Hartford Green



Mesa Red



**Dark Chocolate



Chestnut Bronze



**Black



**Arctic Silver

*Actual colors may vary from the samples displayed

**Not available on horizontal sliding windows, Hallmark hinged swinging patio doors or traditional sliding patio doors

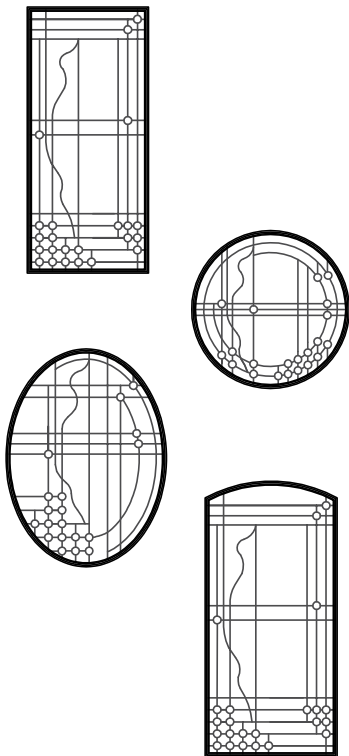
DECORATIVE GLASS OPTIONS

Featuring four popular standard glass collections, this program gives you the capabilities to design endless decorative glass creations. Using combinations of patterns, colors, obscure glass and coming options, we can build nearly anything you can imagine.



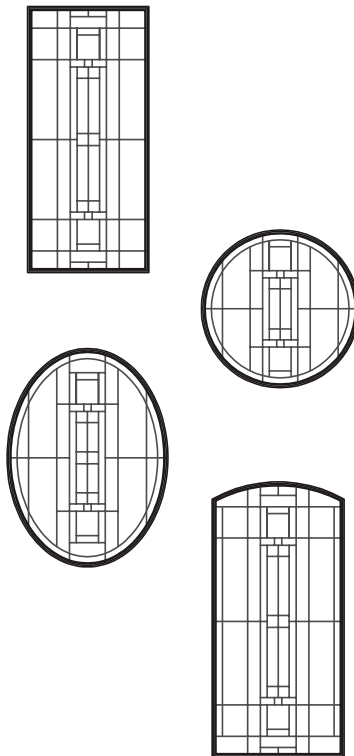
Contemporary Collection

Modern and bold with a unique look certain to add to modern day homes.



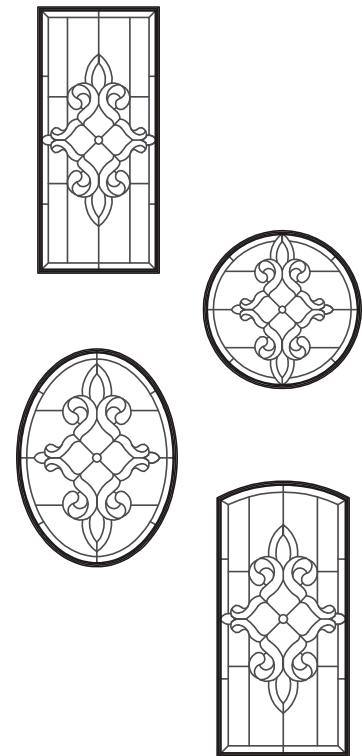
Estate Collection

Fits many types of architecture and has straight bold lines adding to the decor of any home.



Classic Collection

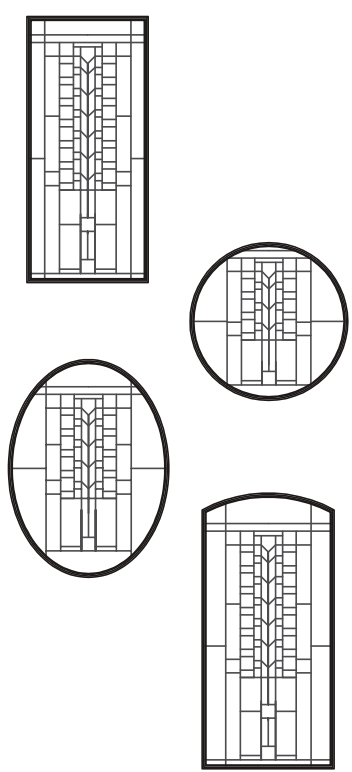
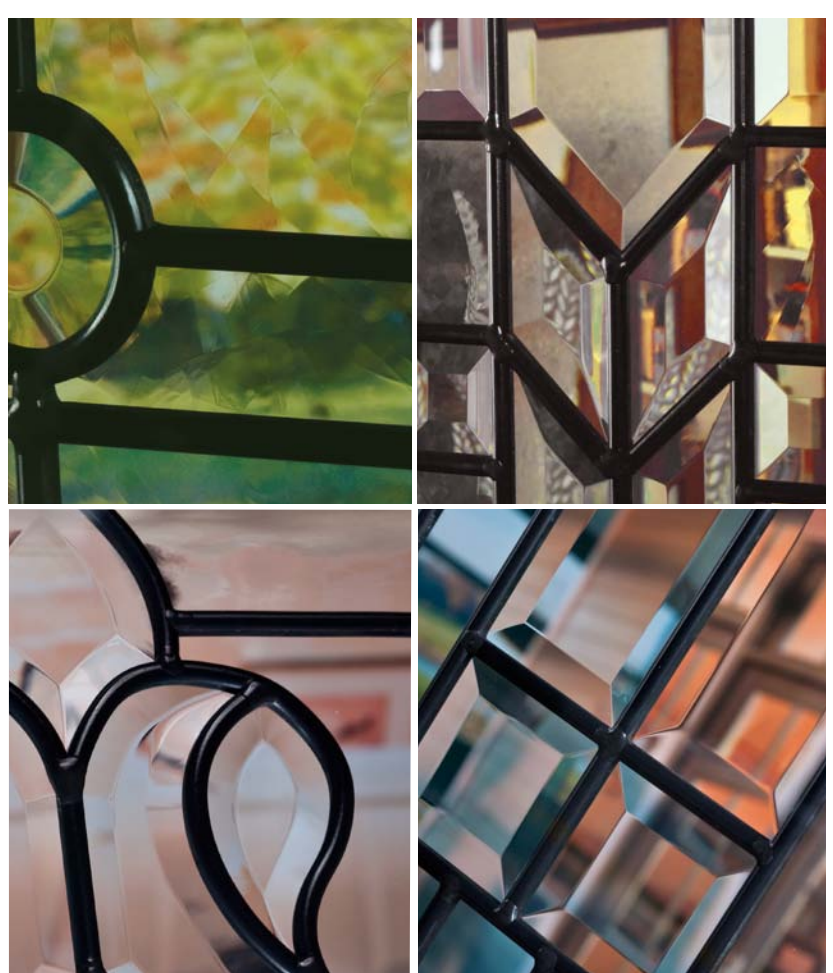
This elegant collection adds a distinct and timeless design element to any home.





Craftsman Collection

A tried and true design that represents a theme that has stood the test of time.



Caming Selections (Below)

Choose one of our five caming selections to determine how ornate, elegant or plain your decorative glass will appear.



**Actual colors may vary from the samples displayed.*



DIVIDED LITES

Add architectural interest to your JELD-WEN Tradition Plus windows with one of our divided lite options. These options include Simulated Divided Lites (SDL) for an authentic look, Full-Surround wood grilles (FS) that can be removed for easy cleaning, and maintenance-free Grilles Between the Glass (GBG).



Simulated Divided Lites (SDL)



Grilles Between the Glass (GBG)



Full-Surround (FS) and removable wood grilles

Simulated Divided Lites (SDL)

To achieve an authentic look, select our simulated divided lites (SDL). They feature grilles that are permanently attached to the exterior glass (aluminum for clad-wood exteriors, wood for primed wood exteriors), wood grilles adhered to the interior glass, and optional Light Brown or Silver shadow bars that are placed between the two panes of insulating glass. Grilles are available in 7/8", 1-1/8" and 1-3/8" sizes.

Grilles Between The Glass (GBG)

With grilles between the glass, you'll enjoy the look of divided lites without any upkeep. They are placed between the two panes of insulating glass. Select 5/8" flat 23/32" or 1" contour metal grilles in any of our clad colors.

Full-Surround Wood Grilles (FS)

Our full-surround wood grilles can be removed for easy cleaning. Choose from 1-1/8", 1-3/8" or 7/8" grilles that are positioned on the interior glass surface.



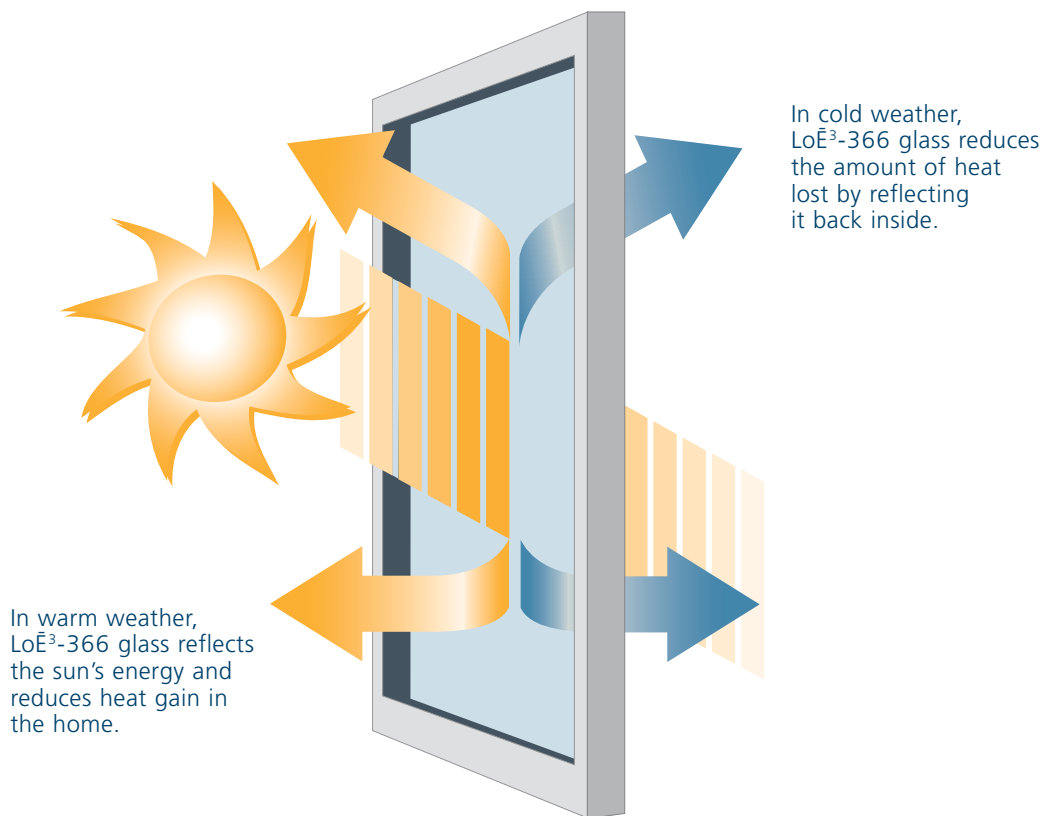
Divided lites with the 23/32" option are available with two-tone coloring. For example, select Brilliant White for the inside and Desert Sand for the outside (or vice versa).

GLASS OPTIONS

Low-E, LoE³-366 and Low-E EC Insulating Glass

Our standard high-performance Low-E insulating glass lowers energy costs, helps homes stay cooler in the summer and warmer in the winter, prevents fading of interior furnishings, and reduces condensation. It also delivers greater visible light transmittance than tinted glass. We also offer optional LoE³-366, which provides more protection against solar heat gain and fading, as well as greater energy savings.

For even more protection choose Low-E EC for an "extra coating" that improves the thermal performance of our windows and is the optimal solution for ENERGY STAR® in certain regions of the country.



Preserve® Protective Film

Preserve film is standard for all Tradition Plus windows and patio doors. It is factory-applied to both the interior and exterior surfaces of the glass. This means the glass surfaces will be reliably protected from debris and scratches that can occur during shipping and handling or at a construction site, so you won't need to spend extra time cleaning your new windows and patio doors. What's more, it's easy to remove.



Tinted Glass

Tinted glass reduces glare, and it's ideal for areas that get a lot of direct sunlight in the summer. We offer Clear, Green, Gray, Bronze, Reflective Gray and Reflective Bronze tinted.



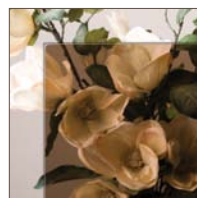
Green



Gray

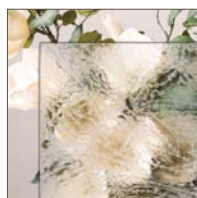


Bronze

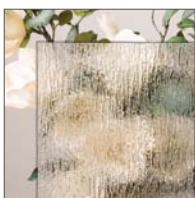
Reflective
GrayReflective
Bronze

Textured Glass

Let light in while maintaining privacy with textured glass. We offer a wide range of textures to meet your aesthetic preferences. Three of our most popular choices are shown below; see your dealer for our complete offering.



Glue Chip



Rain



Obscure

Neat® Glass

With this glass option you gain natural cleaning convenience. By harnessing the sun's UV rays (even when the sky is cloudy) to loosen dirt from the glass, rainwater can easily rinse away grime. No manual activation is required.



High-Altitude Insulating Glass

In higher elevations, atmospheric pressure can cause glass panes to bow outward. To prevent this and ensure structural integrity, select our high-altitude glass. This glass includes breather tubes (placed between the panes of insulating glass) to equalize the airspace pressure with the atmosphere.

Tempered Glass

This type of glass is treated with heat, so it can withstand greater force or pressure on its surface, and it will not break into sharp pieces.

ENERGY STAR®

JELD-WEN has been an energy star partner since 1998, and is a 2010 ENERGY STAR Partner of the Year in the U.S. and 2009 ENERGY STAR Participant of the Year in Canada.



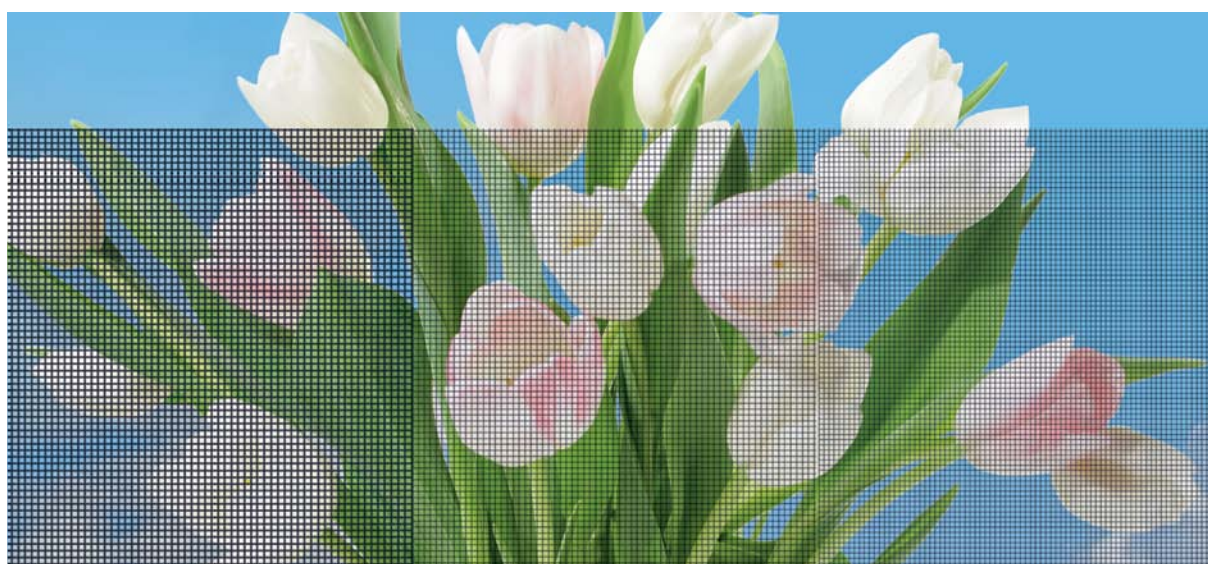


SCREEN OPTIONS

Screen Options*

These screens are designed to keep more insects outside, while letting more natural light inside. They feature fine, black fiberglass mesh with a light gloss finish. BetterVue™ insect screens are now standard for awning, casement, double-hung and horizontal gliding windows.

UltraVue™ Screens



View through regular fiberglass insect screen

View through BetterVue™ insect screen (standard)

View through optional UltraVue™ insect screen

Please note: These images are for illustration purposes only.



Phantom Screens® Technology (shown at left)

Our awning, casement and double-hung windows are now available with Phantom Screens Technology. This feature includes retractable insect screens that fully reveal exterior views.

These screens are made to be durable, secure and easy to use, and they're designed to integrate seamlessly with the rest of the window. Screens for double-hung windows also have a removable track that allows sash to tilt in for easy cleaning.

**Insect screens are intended to allow air and light in, while keeping insects out. They are not intended to stop children from falling through an open door or window. For safety screens and other security devices, contact your local building supply retailer.*



CASEMENT WINDOWS



ADA-compliant handle in Desert Sand



Round knob in White



T-handle in Chestnut Bronze



Nesting handle in Brushed Chrome

A casement window perfectly complements the simplicity of modern design, while also providing maximum ventilation. This type of window is hinged on either side, so the sash opens outward, to the right or left, in a swinging motion.

Standard Hardware Finishes*



White



Desert Sand



Chestnut Bronze

Optional Hardware Finishes*



Brushed Chrome



Polished Brass



Antique Brass



Oil-Rubbed Bronze

*Actual colors may vary from the samples displayed.



AWNING WINDOWS



ADA-compliant handle in Desert Sand



T-handle in Chestnut Bronze



Round knob in White



Nesting handle in Brushed Chrome

An awning window is appropriate for many architectural styles, and it looks intriguing when grouped with other window types. It's hinged at the top and opens out from the bottom in an upward swing.

Standard Hardware Finishes*



White



Desert Sand



Chestnut Bronze

Optional Hardware Finishes*



Brushed Chrome



Polished Brass



Antique Brass



Oil-Rubbed Bronze

*Actual colors may vary from the samples displayed.



DOUBLE-HUNG WINDOWS



Primed wood double-hung windows are equipped with Flex-Hinge® jamb liners, which provide consistent ease of operation.



Sashlock in Antique Brass



Sash tilt in for easy cleaning.

These windows are best suited to traditional architectural styles. Double-hung windows feature an upper and lower sash that slide vertically past each other in a single frame. Both sashes tilt in for convenient cleaning.

Standard Hardware Finishes*



White

Desert Sand

Chestnut Bronze

Optional Hardware Finishes*



Brushed Chrome

Polished Brass

Antique Brass

Oil-Rubbed Bronze

*Actual colors may vary from the samples displayed.



DOUBLE-HUNG REPLACEMENT WINDOWS



Pocket Replacement Window



Sash Replacement Kit

Improve your home with our sash or pocket double-hung replacement windows. To replace old, single pane sash, choose our sash replacement kit with energyefficient insulated glass. To replace entire windows, select our pocket double-hung replacement windows. There's no need to replace existing siding, mouldings or stucco with either option—making installation especially easy.

Standard Hardware Finishes*



White

Desert Sand

Chestnut Bronze

Optional Hardware Finishes*



Brushed Chrome

Polished Brass

Antique Brass

Oil-Rubbed Bronze

*Actual colors may vary from the samples displayed.



HORIZONTAL SLIDING WINDOWS



Sashlock in Chestnut Bronze

Our horizontal sliding windows feature a streamlined, unobtrusive design. Each of these windows has one stationary sash and one sash that slides to the right or left horizontally.

Standard Hardware Finishes*



White



Desert Sand



Chestnut Bronze

Optional Hardware Finishes*



Brushed Chrome



Polished Brass



Antique Brass



Oil-Rubbed Bronze

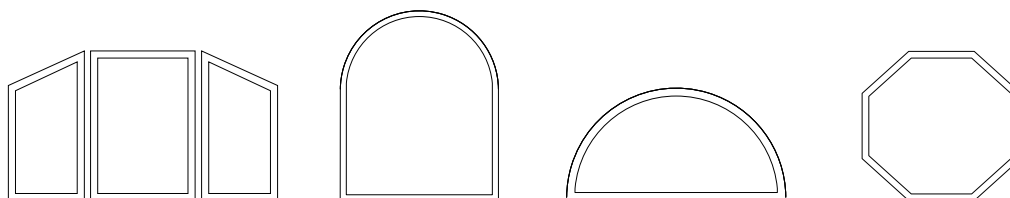
*Actual colors may vary from the samples displayed.



FIXED, RADIUS & GEOMETRIC WINDOWS



Fixed, radius and geometric windows allow you to showcase beautiful views and create intriguing window arrangements with other window types. A radius and geometric window has a fixed (inoperative) sash and is available in a variety of half-round and rectangular shapes and sizes. We also offer direct-set (non-operating) radius and geometric windows.





FRENCH VIEW SWINGING PATIO DOORS



Shown with optional venting sidelites



Swinging Patio Door Handle

Optional ADA-compliant sill for wheelchair accessibility on out-swinging patio doors only.

Check with your local JELD-WEN representative for specific sizes.



These patio doors feature wider stiles and rails, which give them a traditional appearance. French View swinging patio doors swing open in the middle and have no center mullion. They can swing either outward or inward.

Standard Hardware Finishes*



Polished Brass** Antique Brass

Optional Hardware Finishes*



White Satin Nickel** Brushed Chrome Polished Chrome Oil-Rubbed Bronze

**Actual colors may vary from the samples displayed.
Handle and hinge hardware available in all the colors shown here.
**PVD finish optional*



SLIDING PATIO DOORS WIDE STILE OPTION



Multi-Point sliding
Patio Door Handle

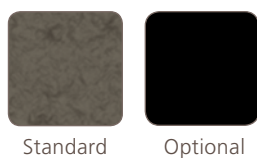
These sliding patio doors are designed with wider stiles and rails, which makes them an appropriate choice for traditional architectural styles. They open by sliding along horizontal tracks at the head and sill.

Primed Pine exteriors and bi-parting doors are available with our wide-stile option. Ask about available sidelights and transoms to further complement your space.

Handle & Hinge Hardware Colors



Sill Colors



**Actual colors may vary from the samples displayed.
**PVD finish optional*



SLIDING PATIO DOORS NARROW STILE OPTION



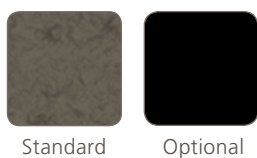
Three-Point sliding patio door handle

We also offer sliding patio doors are designed with narrow stiles and rails. These patio doors are an affordable, space-saving option. They open by sliding along horizontal tracks at the head and sill. Transoms and sidelights with matching sightlines are available.

Handle & Hinge Hardware Colors



Sill Colors



**Actual colors may vary from the samples displayed.
**PVD finish optional*



HALLMARK HINGED PATIO DOORS



Dover-style Handle
in Antique Brass



Lido-style Handle
in Polished Brass

Our Hallmark Hinged patio doors are designed with narrow stiles and rails to create a simple, clean appearance. These patio doors swing inward.

Hardware Finishes*



Polished
Brass



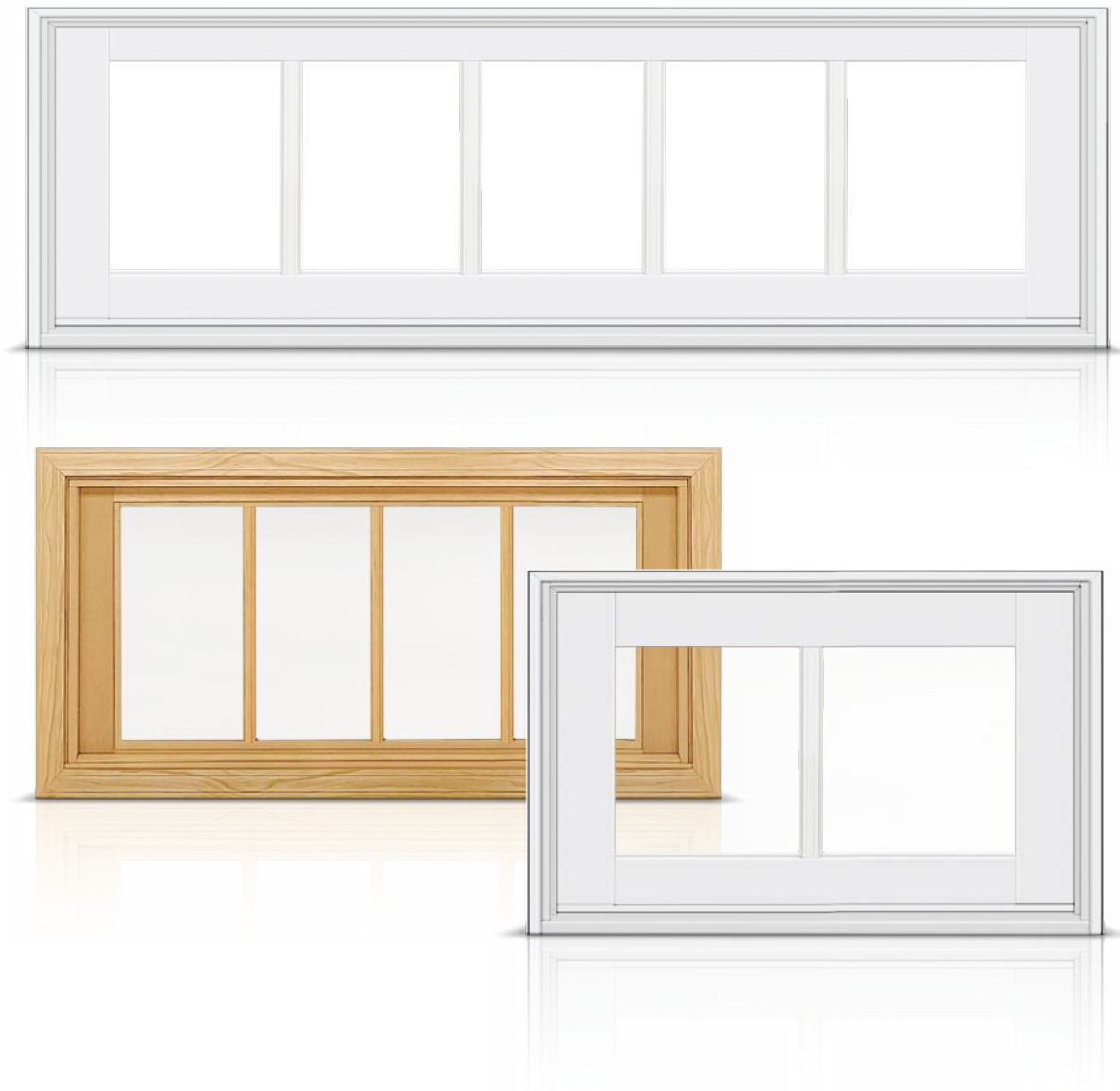
Antique
Brass

**Actual colors may vary from the samples displayed.*

**Handle and hinge hardware available in all the colors shown here.*

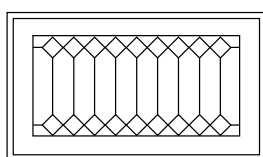


TRANSOM WINDOWS

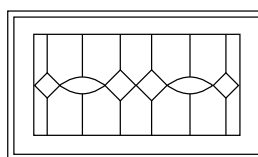


Bring more light inside with our transom windows. A transom is simply a window set above another window or patio door. It can be either stationary or operational.

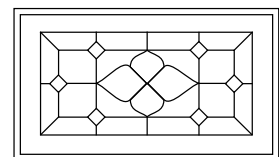
Optional Leaded Glass Patterns



Prism



Horizon



Flora



JELD-WEN® WOOD, METAL-CLAD WOOD WINDOW & PATIO DOOR LIMITED WARRANTY

WARRANTY

OUR WARRANTY TO YOU...

JELD-WEN® Products¹ are designed to create lasting value for your home. This warranty is effective for all JELD-WEN Products manufactured on or after **July 1, 2010** for use in the United States and Canada. Any previous warranties will continue to apply to products manufactured by JELD-WEN prior to this date. For additional information, including care and maintenance instructions, installation instructions and previous warranties, refer to www.jeld-wen.com or www.jeld-wen.ca.

What This Warranty COVERS Twenty Year Warranty for Window & Patio Door Products

Except as set forth in the Special Coverages section below, we warrant that if your JELD-WEN Product exhibits a defect in material or workmanship within **twenty (20)** years from the date of manufacture, we will, at our option, repair, replace or refund the purchase price of the Product or component part. Skilled labor² (where deemed necessary by us) to repair or replace components is provided for **two (2)** years (unless specified otherwise below).

Special Coverages

Clad Finish*: Under normal atmospheric conditions, the clad finish on your metal clad window or patio door manufactured by us will be free from defects as follows:

- Kynar® finishes are warranted for **twenty (20)** years and will not peel, check, crack, or exhibit excessive chalk, fade or color change³.
- All other products that include polyester finishes are warranted for **ten (10)** years and will not peel, check, crack, or exhibit excessive chalk, fade or color change³.

*The term "clad finish" means the painted finish on metal cladding. Clad products installed within one mile of a salt-water source (for example and ocean or salt lake) or other corrosive environment require additional and specific maintenance requirements. Refer to our full care and maintenance instructions.

AuraLast® Protection: We warrant pine wood components of JELD-WEN Products for **twenty (20)** years against wood cellular structure failure (often referred to as "wood cellular breakdown") caused by decay and/or termites. Warranty coverage outside Canada, the contiguous 48 states and Alaska is contingent upon approval from the JELD-WEN Customer Care Department. Please contact us.

Factory Prefinish: We warrant the factory-applied prefinish on our Products against peeling, checking, or cracking for **one (1)** year from the date of manufacture. Should the factory prefinish be proven defective within this time period, we will at our option, replace or refinish the component or product, or offer a refinish credit up to \$50 per opening for windows or \$100 per opening for patio doors. Note: this coverage applies to factory-applied finish coat options only; standard factory-applied primer is not a finish coat.

Custom Fiberglass Door Slabs: We warrant our fiberglass door slabs for **as long as you own and occupy your residence**.

Custom Fiberglass Door Factory Prefinish: We warrant the factory prefinish on our fiberglass doors for **five (5)** years. Should the factory prefinish be proven defective, we will at our option refinish the door or pay up to \$350.00 per opening to the current owner.

Electric Operators: We warrant electric operators provided by us for **one (1)** year (to include free replacement parts and skilled labor² necessary to replace the operator for **one (1)** year).

Blinds/Shades Between the Glass: We warrant the insulated glass unit (including the seal), the external control mechanism, and the operation of the shade/blind for **ten (10)** years.

ImpactGard® Glass: We warrant each ImpactGard glass unit for **ten (10)** years.

Special Glazings (including laminate glass units other than ImpactGard): We warrant special glazings (including glass options not listed in our product literature e.g., leaded or decorative glass) for **five (5)** years.

Spontaneous Glass Breakage: We warrant sealed glass units installed in windows and patio doors (excluding laminated glass, and special glazings) for spontaneous breakage for **one (1)** year (to include free replacement glass and skilled labor² necessary to replace the glass for **one (1)** year. Spontaneous breakage occurs when the glass develops a crack without sign of impact.

Transferability

In the event you sell your residence/building, this warranty is transferable to subsequent owners. In the event you sell your residence/building or it becomes occupied by other than the original owner, the warranty is the lesser of **ten (10)** years from the date of manufacture or the period indicated under Special Coverages above.

How To Get Assistance

If you have a problem with your JELD-WEN product, contact the dealer/distributor or contractor from whom you purchased your product or contact us directly:

In the United States:

Mail: JELD-WEN Customer Care
Attn: Wood/Metal Clad Wood Warranty Claims
P.O. Box 1329, Klamath Falls, OR 97601
Phone: 888-JWHelpU (888-594-3578)
Fax: 800-436-5954
Email: CustomerServiceAgents@jeld-wen.com

In Eastern Canada:

Mail: JELD-WEN Service Department
90, rue Industrielle
Saint-Appollinaire, Quebec, Canada G0S 2E0
Phone: 800-463-1930
Fax: 888-998-1599

In Western Canada:

Mail: JELD-WEN Service Department
550 Munroe Avenue
Winnipeg, Manitoba, Canada R2K 4H3
Phone: 888-945-5627
204-668-8230
Fax: 204-663-1072
Email: wpgservice@jeld-wen.com

We can respond quickly and efficiently if you provide the following: a) product identification (from the original order/invoice, spacer code, permanent label, or the window identification number found on corner of glass, or product identification from the tag on the top edge of the slab), b) how to contact you, c) the address where the product can be inspected, and d) a description of the apparent problem and the product (photographs are helpful).

What We Will Do

Upon receiving your notification, we will send out an acknowledgement, usually within three business days. We will investigate your claim and will begin to take appropriate action within 30 days after notification. If it is determined that the Product does not have a defect covered by the labor warranty, we may charge an inspection fee for any onsite inspection that is required or requested by you. Because manufacturing materials and techniques can change, replacement part(s) may not be an aesthetic match to the original. Replacement components/products are warranted for the balance of the original product warranty or 90 days, whichever is longer. If we determine we are unable to provide replacement parts and repair is not practicable or cannot be made timely, then we will refund the unit/component purchase price.

If the claimed nonconformity is warp of a door slab, we may defer repairing or replacing the door slab for a period up to **twelve (12)** months from the date of claim. It is not uncommon for a temporary warp condition to occur as the door slab adjusts to local humidity and temperature conditions. This deferral will not be counted against the warranty period.

Continued on next page

What This Warranty Does NOT Cover

JELD-WEN is not liable for:

- Normal wear and tear, including normal wear and tear of weatherstrip; natural weathering of surfaces. Variance in color or texture of natural wood parts, and natural tarnishing of copper cladding are not considered defects.
- Normal wear and tear to hardware and naturally occurring changes to hardware finishes (e.g., corrosion or tarnishing).
- Damage caused by chemicals (e.g. brick wash) or a harsh environment (e.g. salt spray or airborne pollutants) unless otherwise stated above.
- Product failure due to misuse or abuse; damage caused by failure to properly finish and provide maintenance, by alteration or modification to the window (e.g. customer applied tints or films, paint finishes, security systems), or as a result of any cause beyond the control of JELD-WEN (e.g. fire, flood, earthquake, other acts of nature, and acts of third parties outside of our control).
- Failure to provide an adequate overhang for fiberglass doors; damage caused by extreme temperature buildup where storm doors are present. For general guidelines, see our "Appropriate Protection for Exterior Doors" in our product literature or at www.jeld-wen.com/resources; for specific information pertaining to your structure, consult your contractor or other building professional.
- Slight expansion or contraction due to varying environmental conditions; slab movement (shrinkage or swelling) of 1/4" or less due to temperature and humidity, consult the Homeowner's Manual on how to work with this natural movement.
- Glass breakage (except spontaneous breakage as covered above).
- Slight imperfections or wavy distortions in the glass that don't impair structural integrity. Note: wavy distortions in the glass (e.g. related to laminate interlayer or heat strengthening of glass) are not considered a defect. Slight color variations in glass are not considered a defect.
- Improper installation not in conformance with JELD-WEN installation instructions (note: see www.jeld-wen.com for current installation instructions); operational problems and problems related to water and/or air infiltration/leaking as a result of improper installation or flaws in building design or construction.
- Damage or poor product performance resulting from installation into a condition that exceeds product design standards and/or certified performance specifications and/or is not in compliance with building codes.
- Damage caused by extreme artificial temperature buildup or exposure (e.g., where storm doors/windows are present).
- Product or component performance decline due to aging, inert gas dissipation, natural processes or failure to provide proper maintenance. Note: Other than inert gas loss due to seal failure, the migration of an inert gas, such as argon, is a natural process that occurs over time and is not a defect.
- Screen damage due to normal wear and tear, misuse, abuse, or insect or animal activity.
- Hardware or inserts that are not provided by us, such as locksets, door handles, strikes, etc.
- Condensation or damage as a result of condensation (Note: unless due to insulating glass failure, most condensation problems are related to excessive humidity levels in a structure; contact a heating/air conditioning specialist for help).
- Labor and materials for repainting or refinishing activities, or the removal or disposal of defective product(s); labor exceeding the time periods specified above.
- Wood cellular structure failure for wood components other than of pine species and any components (including pine) that come in direct contact with soil. Note: superficial mold/mildew does not indicate wood cellular structure failure.
- Incidental or consequential damage. Some states/provinces do not allow the exclusion or limitation of incidental or consequential damages, so this may not apply to you.

Important Legal Information

This Limited Warranty document sets forth our maximum liability for our products. We shall not be liable for special, indirect, consequential, or incidental damages. Your sole and exclusive remedy with respect to any and all losses or damages resulting from any cause whatsoever shall be as specified above. We make no other warranty or guarantee, either express or implied, including implied warranties of merchantability and fitness for a particular purpose to the original purchaser or to any subsequent user of the product, except as expressly contained herein. In the event state or provincial law precludes exclusion or limitation of implied warranties, the duration of any such warranties shall be no longer than, and the time and manner of presenting any claim thereon shall be the same as, that provided in the express warranty stated herein. This Limited Warranty document gives you specific legal rights, and you may have other rights that vary from state/province to state/province.

No distributor, dealer or representative of JELD-WEN has the authority to change, modify or expand this warranty. The original purchaser of this Product acknowledges that they have read this warranty, understand it and are bound by its terms and agrees to provide this warranty to the original owner of the structure into which the Product is installed.

¹ "JELD-WEN Products" shall refer to wood and metal clad wood window and patio/garden/terrace door products (including products supplied with fiberglass slabs) manufactured in the United States and/or Canada and marketed under the JELD-WEN brand name for use in the United States and Canada. See our separate Export Warranty for applicable coverage on products used outside the United States and Canada.

² "Skilled labor" refers to tasks where specialized technical knowledge, experience, methods or tools are required to properly identify, diagnose and/or correct product-related problems.

³ "Chalking" of the clad finish is not a defect unless it exceeds a numerical rating of eight (8) when measured in accordance with the standard procedures specified in ASTM D4214. Fading or changing in color of the "clad finish" is not a defect unless it exceeds five (5) E units, calculated in accordance with ASTM D2244, paragraph 6.2. Color change shall be measured on an exposed "clad finish" that has been cleaned of surface soils and chalk, and the corresponding values measured on the original or unexposed "clad finish." Fading or color changes may not be uniform if the surfaces are not equally exposed to the sun and elements. If the above ASTM standards change, the standard in effect at the time of purchase applies. As an option to replacement, we may choose to refinish the product.

ABOUT JELD-WEN



Since 1960, when JELD-WEN began with one Oregon millwork plant, we've been dedicated to crafting reliable windows and doors. Today you can see, touch and feel reliability in our beautiful windows and doors because of their durability, energy efficiency and worry-free performance.

We measure our success by the relationships we build with our customers, suppliers and communities where we live and work. We've partnered with organizations such as the Green Building Initiative, which accelerates green-building practices by promoting environmentally progressive approaches that are practical, affordable and accessible.

Another way we fulfill our commitment to the communities where we operate, is through the JELD-WEN Foundation, which was created in 1969 to support worthwhile endeavors in the communities where JELD-WEN operates.

JELD-WEN is an official partner of Major League Soccer and the Portland Timbers, as well as a founding member of the Portland Timbers Community Fund. Our soccer partnerships help us connect with grass roots efforts that build strong communities.

Every time the Timbers score a goal, we sponsor a tree to be planted through Friends of Trees.

The JELD-WEN website is your ultimate resource for learning about our reliable windows and doors. It has all the product information and design advice you need. Visit us at jeld-wen.com today.



Official window and door provider of Major League Soccer



JELD-WEN is proud to support a better way to build



Made in the USA

© 2011 JELD-WEN, inc. This publication and its contents are owned by JELD-WEN, inc. and are protected under the U.S. Copyright Act and other intellectual property laws. All trademarks, service marks, logos, and the like (whether registered or unregistered) are owned or controlled by JELD-WEN, inc. or others. Unauthorized use or duplication of JELD-WEN intellectual property is prohibited.

JELD-WEN reserves the right to change product specifications without notice. Please check our website, www.jeld-wen.com, for current information.

11-566A 04/12 (CDS 04/12 7.5M)