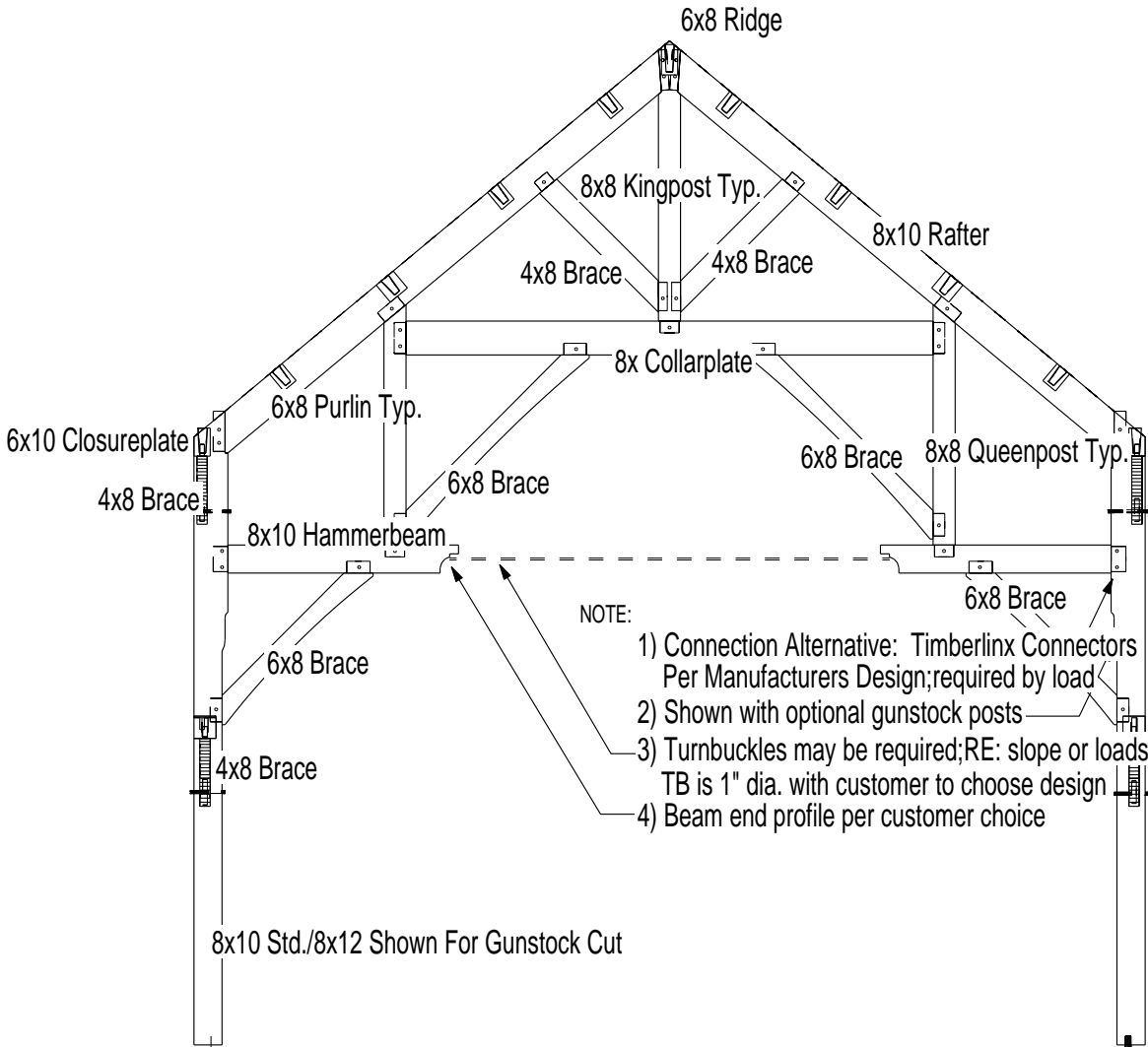


Typical Joinery Connections:



TYPICAL HAMMER BEAM BENT

THE DESIGN REPRESENTED ON THIS PLAN IS INTENDED TO BE USED EXCLUSIVELY IN CONJUNCTION WITH THE CONSTRUCTION OF A STRUCTURE MANUFACTURED BY TENNESSEE TIMBERFRAME, AND, UNDER COPYRIGHT LAW, MAY NOT BE USED FOR ANY OTHER PURPOSE.

ALL RIGHTS RESERVED RESPECTING DESIGN AND SUBJECT SHOWN ON THIS PLAN

Tennessee Timberframe
2537 Dectur Pike
Athens, Tennessee 37303

800-251-9218

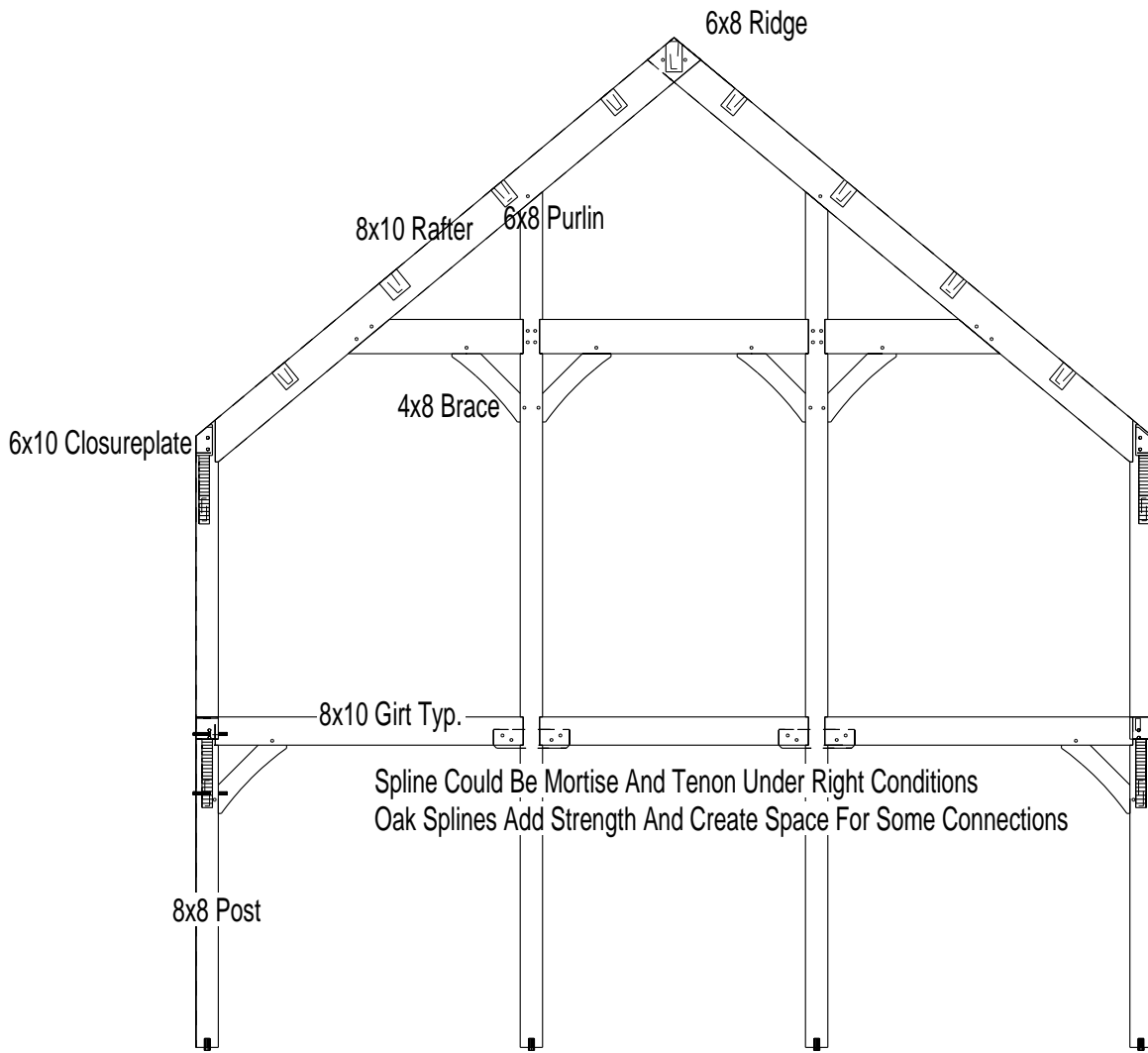
CUSTOMER: CONNECTION DETAILS

TITLE: STANDARD HAMMER BENT

REVISON DATE: 3/09

DRAWN BY: csg

PAGE: 1 OF 8



TYPICAL BENT

THE DESIGN REPRESENTED ON THIS PLAN IS INTENDED TO BE USED EXCLUSIVELY IN CONJUNCTION WITH THE CONSTRUCTION OF A STRUCTURE MANUFACTURED BY TENNESSEE TIMBERFRAME, AND, UNDER COPYRIGHT LAW, MAY NOT BE USED FOR ANY OTHER PURPOSE.

ALL RIGHTS RESERVED RESPECTING DESIGN AND SUBJECT SHOWN ON THIS PLAN

Tennessee Timberframe
2537 Dectur Pike
Athens, Tennessee 37303
800-251-9218

CUSTOMER: CONNECTION DETAILS

TITLE: TYPICAL BENT

REVISON DATE: 3/09

DRAWN BY: csg

PAGE: 2 OF 8

Rafter To Post:

- 1) Tenon = 1.5" Min. Width to 2" Max. Width
Tenon Height Is Equal To Timber Height Minus 1/2" Min. To 1" Max. Setback
- 2) Rafter Is Housed Into Post 1"
- 3) (2) 3/4" Oak Pegs @ Each Connector

Rafter To Kingpost:

- 1) Tenon = 1.5" Min. Width to 2" Max. Width
Tenon Height Is Equal To Timber Height Minus 1/2" Setback
- 2) Rafter Is Housed Into Post 1"
- 3) (2) 3/4" Oak Pegs @ Each Connector

Rafter To Rafter:

- 1) Connection Made With 1/2 Lap
Lap Is 1/2 Of Timber In EA. Direction
- 2) (2) 3/4" Oak Pegs @ Connection

Ridge/Purlins To Rafters:

- 1) Dovetails With Angle Between 8-10 Degrees Each End
- 2) Dovetails Secured With 9" Log Hogs - 2 Per Connection

Braces To Receiving Timber:

- 1) Tenon = 1.5" Min. To 2" Max. Width
Tenon Height Is Equal To Timber Height Minus 1" Setback Ea. Side Of Tenon
- 2) (1) 3/4" Oak Pegs @ Each Connection

Top Plates To Posts:

- 1) Dovetails With Angle Between 8-10 Degrees Each End Where Possible
Otherwise Same Tenons As Rafter To Post
- 2) Dovetails Secured With 9" Log Hogs - 2 Per Connection
- 3) (2) 3/4" Oak Pegs @ Each Connector If Tenon Used
- 4) Timbers Housed Into Receiving Timbers Min. Of 1/2" To 1" Max.

THE DESIGN REPRESENTED ON THIS PLAN IS INTENDED TO BE USED EXCLUSIVELY IN CONJUNCTION WITH THE CONSTRUCTION OF A STRUCTURE MANUFACTURED BY TENNESSEE TIMBERFRAME, AND, UNDER COPYRIGHT LAW, MAY NOT BE USED FOR ANY OTHER PURPOSE.

ALL RIGHTS RESERVED RESPECTING DESIGN AND SUBJECT SHOWN ON THIS PLAN

Tennessee Timberframe
2537 Dectur Pike
Athens, Tennessee 37303
800-251-9218

CUSTOMER: CONNECTION DETAILS

TITLE: NOTES

REVSTON DATE: 3/09

DRAWN BY: csg

PAGE: 3 OF 8

Other Plates To Posts:

- 1) Tenon = 1.5" Min. Width to 2" Max. Width
Tenon Height Is Equal To Timber Height Minus 1/2" Min. To 1" Max. Setback
- 2) (2) 3/4" Oak Pegs @ Each Horizontal Connections If Timber Will Receive
- 3) If Connection Area Is Too Busy Then A Spline Application Will Be Used Refer To Spline Details

All Other Timbers:

- 1) Tenon = 1.5" Min. To 2" Max. Width
Tenon Height Is Equal To Timber Height Minus 1/2" Setback Ea. Side
- 2) (1) 3/4" Oak Pegs @ Each Vertical Connections
(2) 3/4" Oak Pegs @ Each Horizontal Connections If Timber Will Receive

See Detail For Connection To Subfloor

POST TO DECK DETAIL



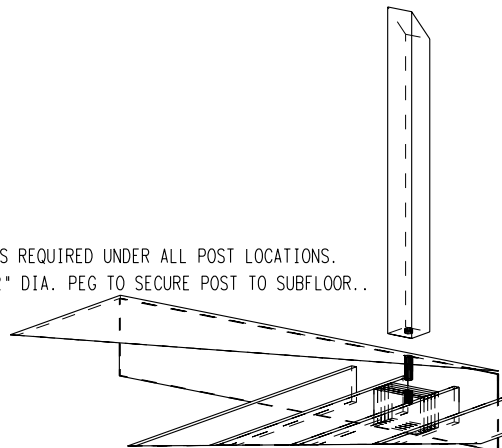
TIMBER LINX A475 IN POST ATTACHED PER MFR. INSTRUCTIONS
ATTACH A475 TIMBERLINX TO L010 10" LAG HANG BOLT ATTACHED TO DECK FLOOR

POST TO SLAB DETAIL



PLATE TO BE ATTACHED TO SLAB PER LOCAL CODES.
T-SHAPED STEEL PLATE W/ 12" FLANGE INTO POST SECURED WITH (2) 5/8" BOLTS
SIMPSON POST BASE MAY BE SUBSTITUTED PER MFR.'S INSTRUCTIONS

SOLID BLOCKING IS REQUIRED UNDER ALL POST LOCATIONS.
BLOCKING AND POST TO RECEIVE 2" DIA. PEG TO SECURE POST TO SUBFLOOR..



POST TO FLOOR DETAIL

THE DESIGN REPRESENTED ON THIS PLAN IS INTENDED TO BE USED EXCLUSIVELY IN CONJUNCTION WITH THE CONSTRUCTION OF A STRUCTURE MANUFACTURED BY TENNESSEE TIMBERFRAME, AND, UNDER COPYRIGHT LAW, MAY NOT BE USED FOR ANY OTHER PURPOSE.

ALL RIGHTS RESERVED RESPECTING DESIGN AND SUBJECT SHOWN ON THIS PLAN

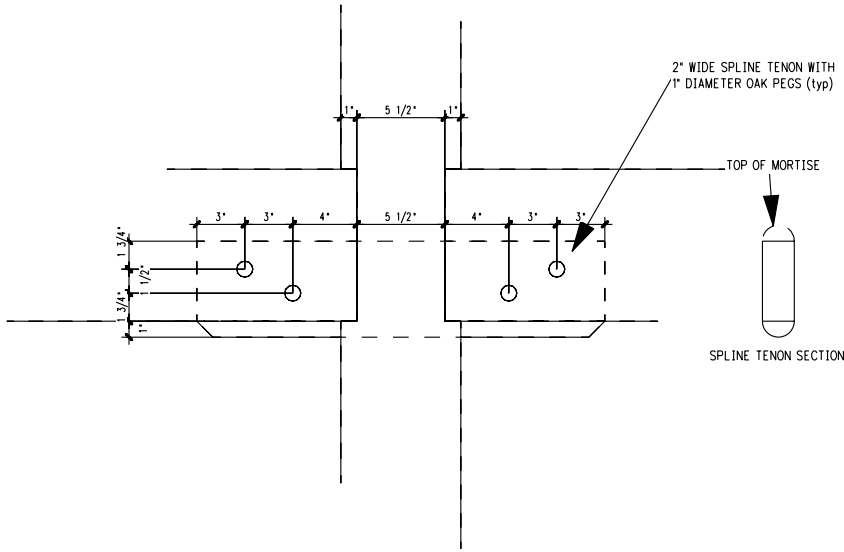
Tennessee Timberframe
2537 Dectur Pike
Athens, Tennessee 37303
800-251-9218

CUSTOMER: CONNECTION DETAILS

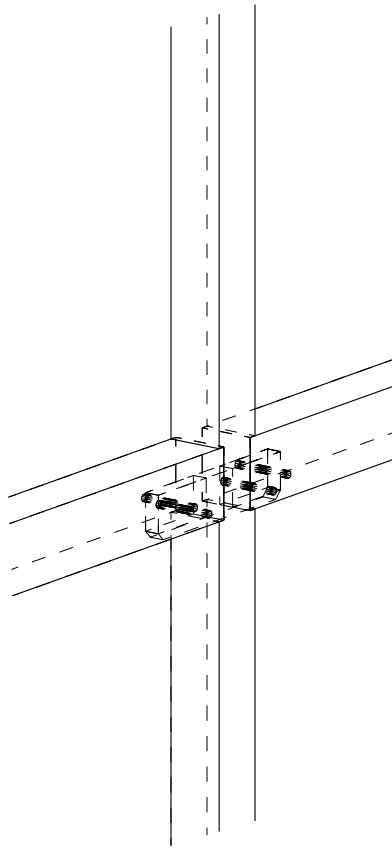
TITLE: NOTES

REVSTON DATE: 3/09 DRAWN BY: csg

PAGE: 4 OF 8



TYPICAL SPLINE TENON DETAIL



THE DESIGN REPRESENTED ON THIS PLAN IS INTENDED TO BE USED EXCLUSIVELY IN CONJUNCTION WITH THE CONSTRUCTION OF A STRUCTURE MANUFACTURED BY TENNESSEE TIMBERFRAME, AND, UNDER COPYRIGHT LAW, MAY NOT BE USED FOR ANY OTHER PURPOSE.

ALL RIGHTS RESERVED RESPECTING DESIGN AND SUBJECT SHOWN ON THIS PLAN

Tennessee Timberframe
 2537 Dectur Pike
 Athens, Tennessee 37303

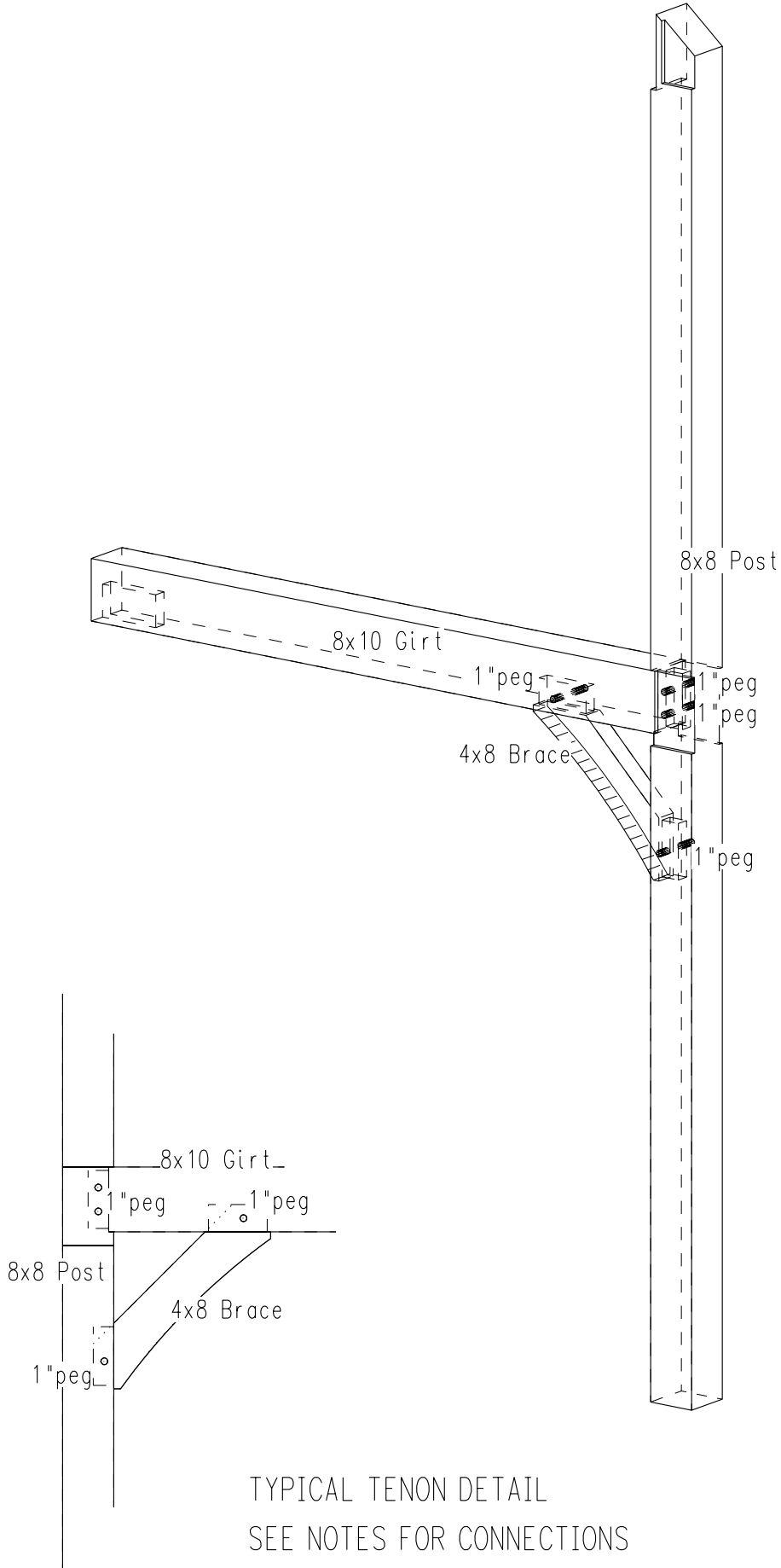
800-251-9218

CUSTOMER: CONNECTION DETAILS

TITLE: SPLINE DETAIL

REVISON DATE: 3/09 DRAWN BY: csg

PAGE: 5 OF 8



TYPICAL TENON DETAIL
SEE NOTES FOR CONNECTIONS

THE DESIGN REPRESENTED ON THIS PLAN IS INTENDED TO BE USED EXCLUSIVELY IN CONJUNCTION WITH THE CONSTRUCTION OF A STRUCTURE MANUFACTURED BY TENNESSEE TIMBERFRAME, AND, UNDER COPYRIGHT LAW, MAY NOT BE USED FOR ANY OTHER PURPOSE.

ALL RIGHTS RESERVED RESPECTING DESIGN AND SUBJECT SHOWN ON THIS PLAN

Tennessee Timberframe
2537 Dectur Pike
Athens, Tennessee 37303
800-251-9218

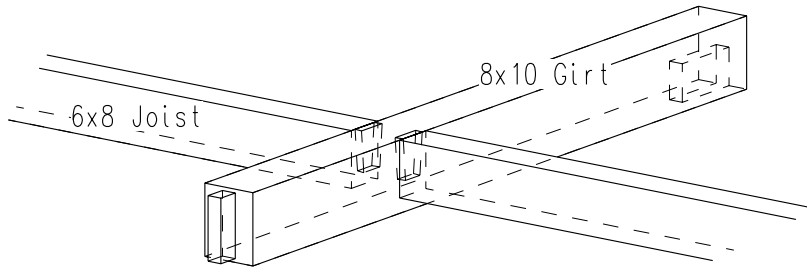
CUSTOMER: CONNECTION DETAILS

TITLE: TENON DETAIL

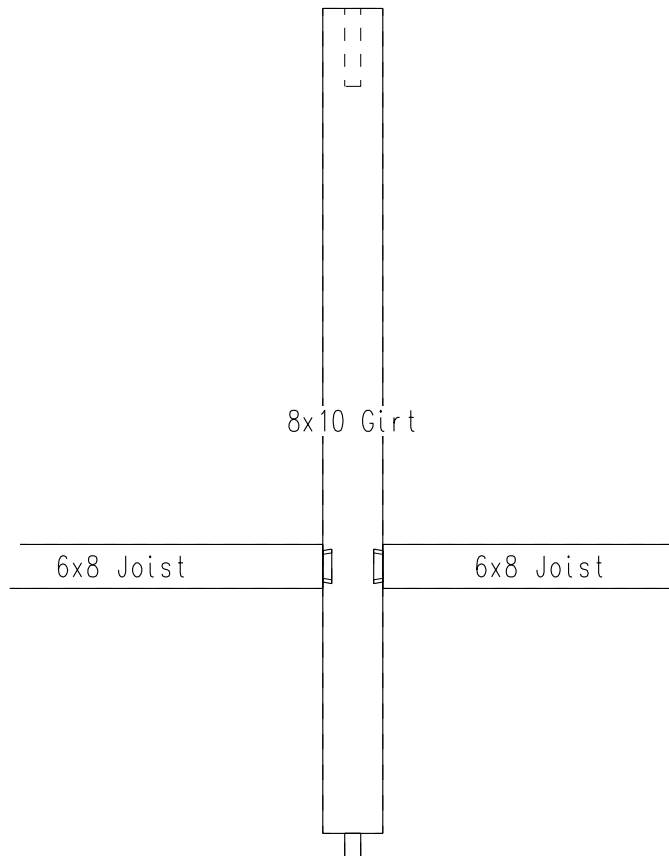
REVISON DATE: 3/09

DRAWN BY: csg

PAGE: 6 OF 8



ALSO SEEN IS A TENON AND A MORTISE POCKET FOR A TENON(SPLINE)



TYPICAL DOVETAIL DETAIL
SEE NOTES FOR CONNECTIONS

THE DESIGN REPRESENTED ON THIS PLAN IS INTENDED TO BE USED EXCLUSIVELY IN CONJUNCTION WITH THE CONSTRUCTION OF A STRUCTURE MANUFACTURED BY TENNESSEE TIMBERFRAME, AND, UNDER COPYRIGHT LAW, MAY NOT BE USED FOR ANY OTHER PURPOSE.

ALL RIGHTS RESERVED RESPECTING DESIGN AND SUBJECT SHOWN ON THIS PLAN

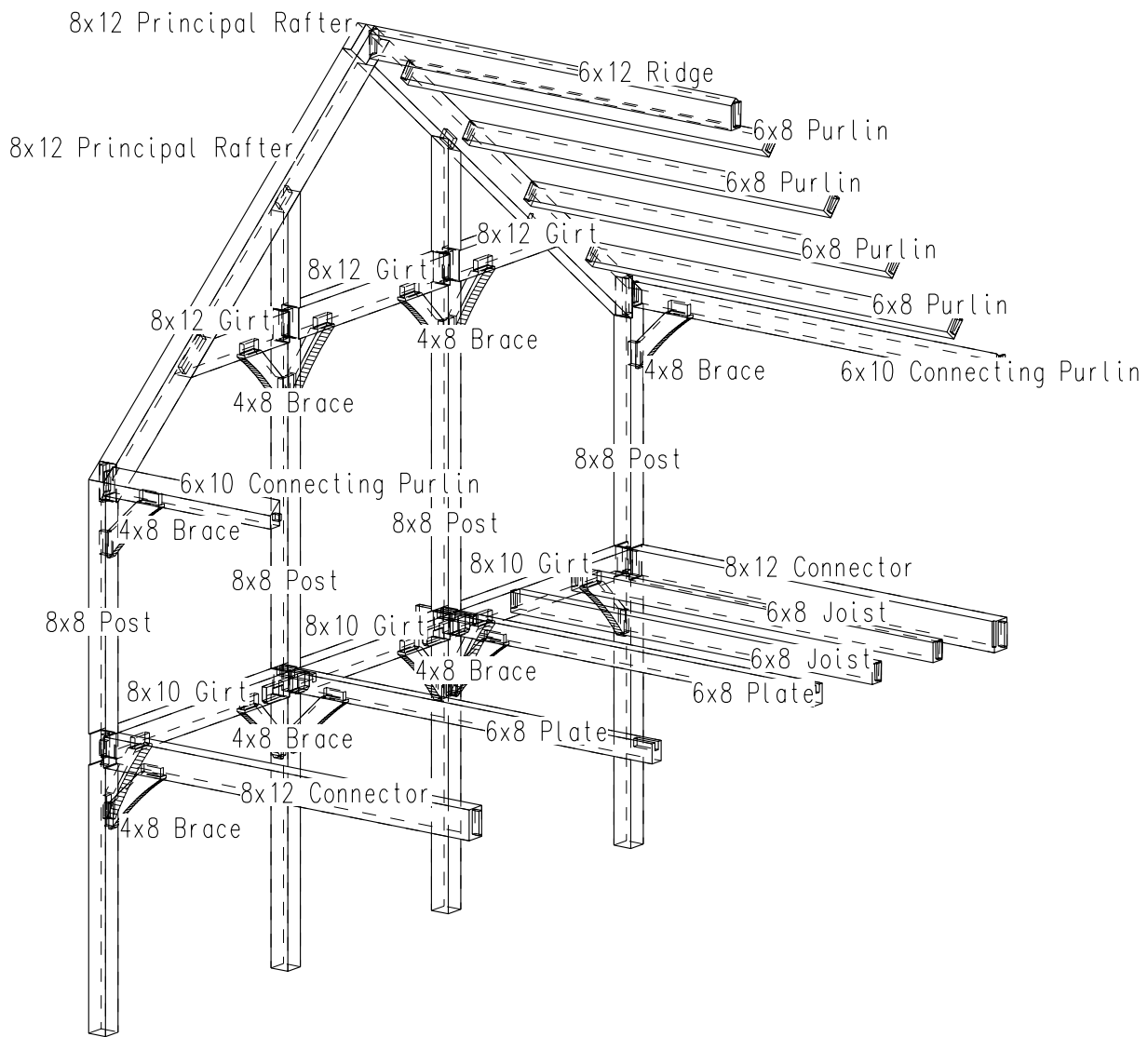
Tennessee Timberframe
2537 Dectur Pike
Athens, Tennessee 37303
800-251-9218

CUSTOMER: CONNECTION DETAILS

TITLE: TENON DETAIL

REVISON DATE: 3/09 DRAWN BY: csg

PAGE: 7 OF 8



TYPICAL BENT / BAY

THIS ONE IS FOR A HEAVY SNOW LOAD-IT HAS BEEN UPGRADED IN SIZING
 PARTS ARE STANDARD ; REFER TO TIMBER FRAME SPEC. SHEET FOR STANDARD SIZING.

THE DESIGN REPRESENTED ON THIS PLAN IS INTENDED TO BE
 USED EXCLUSIVELY IN CONJUNCTION WITH THE CONSTRUCTION OF A
 STRUCTURE MANUFACTURED BY TENNESSEE TIMBERFRAME, AND, UNDER
 COPYRIGHT LAW, MAY NOT BE USED FOR ANY OTHER PURPOSE.

ALL RIGHTS RESERVED RESPECTING DESIGN AND
 SUBJECT SHOWN ON THIS PLAN

Tennessee Timberframe
 2537 Dectur Pike
 Athens, Tennessee 37303
 800-251-9218

CUSTOMER: CONNECTION DETAILS

TITLE: TENON DETAIL

DRAWN BY: csg

PAGE: 7 OF 8

REVISON DATE: 3/09